

SHANTUI

DH08-B3

Crawler Dozer



Engine Model: WEICHAI WP4G95E221
Gross Power: 70 kW(94 hp)
Operating Weight: XL:8,680kg
LGP:9,090kg

Linde Hydrostatic Travel Drive
electronic control

DH08-B3 SPECIFICATIONS

ENGINE

Engine	WEICHAI WP4G95E221
Emission	China-II
Rated revolution	2200 rpm
Gross power	70 kW(94 hp)
Net power	63 kW(85 hp)
Displacement	4.5 L(274 cu.in)
Max. torque	380 Nm(280 lb.-ft.)/1400-1600 rpm

DRIVE SYSTEM

Drive system	Independent dual-circuit electric control hydrostatic drive, intelligent matching of speed-load	
System overflow pressure	42500 KPa(6162.5 psi)	
Traveling speed	Forward	0~9 km/h(5.6 mph)
	Backward	0~9 km/h(5.6 mph)
Max. theoretical traction force	160.4 kN(36044 lb.)	
Steering	Independent drive of track at both sides to ensure the full power output for pivot steering and steering with load	
Brake	Regular closed multi-disk brake	
Final drive	Double planetary reduction	

CHASSIS SYSTEM

	XL	LGP
Type	Rigid type suspension	Rigid type suspension
Track shoe type	Single gouser	Single gouser
Track gauge	1650 mm(65 in.)	1790 mm(70 in.)
Width of track shoe	460 mm(18 in.)	610 mm(24 in.)
Track grounding length	2225 mm(87.6 in.)	2225 mm(87.6 in.)
Track grounding area	20470 cm ² (3173 sq.in.)	27145 cm ² (4207 sq.in.)
Number of track shoe	42	42
Grounding pressure (standard configuration)	42.4kPa(6.15 psi)	33.5 kPa(4.86 psi)
Number of carrier roller	1/single side	1/single side
Number of track roller	6/single side	6/single side
Pitch	154.1 mm(6 in.)	154.1 mm(6 in.)

REFILL CAPACITY

Fuel capacity	197 L(52 gal.)
Coolant liquid capacity	19 L(5.0 gal.)
Engine oil capacity	10 L(2.6 gal.)
Hydraulic oil tank	53 L(14 gal.)
Final drive	5.8 L(1.52 gal.)/single side

OPERATING WEIGHT

	XL	LGP
Operating weight (ROPS canopy + traction frame)	8680 kg(19136 lb.)	9090kg(20044 lb.)
Operating weight (ROPS canopy + ripper)	9350 kg(20591 lb.)	9750 kg(21493 lb.)
Operating weight (Cabin+ traction frame)	8950 kg(19731 lb.)	9360 kg(20640 lb.)
Operating weight (Cabin+ ripper)	9600 kg(21164 lb.)	10020 kg(22088 lb.)

BLADE

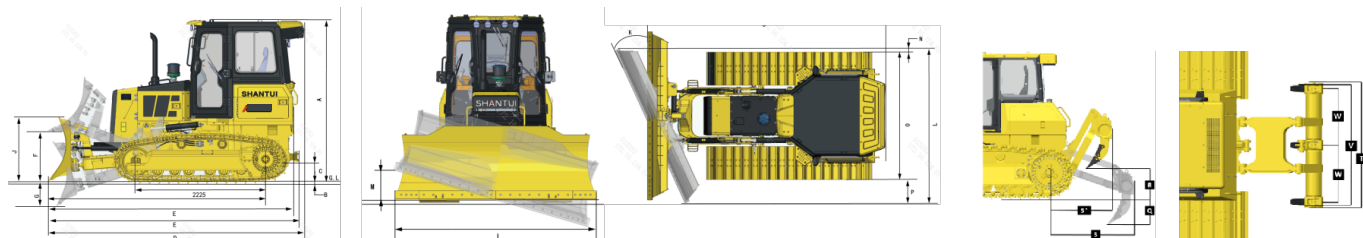
	XL	LGP
Blade type	PAT	PAT
Blade capacity	1.93 m ³ (2.5cu.yd.)	2.04 m ³ (2.7cu.yd.)

DIMENSION

	XL	LGP
A Machine height (with Track grouser height)	2950 mm(116in.)	2950 mm(116 in.)
B Track grouser height	47 mm(1.9 in.)	47mm(1.9 in.)
C Ground clearance	320 mm(13in.)	320 mm(13 in.)
D Machine length (with air condition)	4568 mm(180 in.)	4568 mm(180 in.)
E Machine length (with draw bar)	4468 mm(176.4 in.)	4468 mm(176.4 in.)
E' Machine length (without draw bar)	4373 mm(153.2 in.)	4373 mm(153.2 in.)
E'' Length of blade to center of final drive	3870 mm(153.2 in.)	3870 mm(153.2 in.)
E''' Length of center of idle wheel final drive	2225 mm(87.6 in.)	2225 mm(87.6 in.)
F Max. lifting height of blade	900 mm(35 in.)	900 mm(35 in.)
G Max. digging depth of blade	450 mm(17.7 in.)	450 mm(17.7 in.)
H Digging angle of blade	55°±3°(deg.)	55°±3°(deg.)
I Blade width	2680 mm(106 in.)	3150 mm(124 in.)
J Blade height	1090 mm(42.9 in.)	1090 mm(42.9 in.)
K Max blade turning angle on ground	25°(deg.)	25°(deg.)
L Machine width when blade in max turning angle	2474 mm(97 in.)	2896 mm(114 in.)
M Max tilt height of blade	389 mm(15 in.)	457 mm(18 in.)
N Vertical distance from left track shoe outside to blade outside when blade in max turning angle	4 mm(0.2 in.)	64 mm(2.5 in.)
O Track shoes outside width	2110 mm(83 in.)	2400 mm(95 in.)
P Vertical distance from right track shoe outside to blade outside when blade in max turning angle	364 mm(14 in.)	432 mm(17 in.)
Min turning radius	2790 mm(109.8 in.)	2800 mm(110.2 in.)

RIPPER

Q Max. ripping depth	340 mm(13.4 in.)	340 mm(13.4 in.)
R Max. lifting height	440 mm(17.3 in.)	440 mm(17.3 in.)
S Ripper length (at deepest ripping)	1366 mm(53.8 in.)	1366 mm(53.8 in.)
S' Ripper length (at highest point)	972 mm(38.3 in.)	972 mm(38.3 in.)
T Ripper width	1766 mm(69.5 in.)	1766 mm(69.5 in.)
V Ripping width	1696 mm(66.8 in.)	1696 mm(66.8 in.)
W Distance between ripper teeth	800 mm(31.5 in.)	800 mm(31.5 in.)



* THE SPECIFICATIONS ARE SUBJECT TO CHANGE WITHOUT NOTICE. THE PICTURES MAY INCLUDE OPTIONS. THE ACTUAL COLOR & APPEARANCE OF THE PRODUCT MAY DIFFER FROM WHAT IS SHOWN.

SHANTUI CONSTRUCTION MACHINERY CO., LTD.

ADD: No. 58, G327 Highway Jining City, Shandong, CHINA
 TEL: +86-537-2909369
 FAX: +86-537-2311219
 EMAIL: trade@shantui.com
 WEB: www.shantui.com

SHANTUI
 LET'S MAKE CONSTRUCTION EASIER