

SHANTUI

DH10-B3

Crawler Dozer



Engine Model: WEICHAJ WP4G110E221
Gross Power: 82 kW(110 hp)
Operating Weight: XL:9,580kg
LGP:9,990kg

Linde Hydrostatic Travel Drive
electronic control

DH10-B3 SPECIFICATIONS

ENGINE

Engine	WEICHAİ WP4G110E221
Emission	China-II
Rated revolution	2000 rpm
Gross power	82kW(110 hp)
Net power	74 kW(99 hp)
Displacement	4.5 L(274 cu.in)
Max. torque	460 Nm(339 lb.-ft.)/1300-1500 rpm

DRIVE SYSTEM

Drive system	Independent dual-circuit electric control hydrostatic drive, intelligent matching of speed-load	
System overflow pressure	42500 KPa(6162.5 psi)	
Traveling speed	Forward	0~9 km/h(5.6 mph)
	Backward	0~9 km/h(5.6 mph)
Max. theoretical traction force	155.2 kN(34914 lb.)	
Steering	Independent drive of track at both sides to ensure the full power output for pivot steering and steering with load	
Brake	Regular closed multi-disk brake	
Final drive	Double planetary reduction	

CHASSIS SYSTEM

	XL	LGP
Type	Rigid type suspension	Rigid type suspension
Track shoe type	Single gouser	Single gouser
Track gauge	1650 mm(65 in.)	1790 mm(70 in.)
Width of track shoe	460 mm(18 in.)	630 mm(25 in.)
Track grounding length	2320 mm(91 in.)	2320mm(91in.)
Track grounding area	21344 cm ² (3308 sq.in.)	29231 cm ² (4631 sq.in.)
Number of track shoe	42	42
Grounding pressure (standard configuration)	46.1kPa(6.69 psi)	35.2 kPa(5.11 psi)
Number of carrier roller	2/single side	2/single side
Number of track roller	6/single side	6/single side
Pitch	171.45mm(6.75 in.)	171.45mm(6.75 in.)

REFILL CAPACITY

Fuel capacity	197 L(52 gal.)
Coolant liquid capacity	19 L(5.0 gal.)
Engine oil capacity	10 L(2.6 gal.)
Hydraulic oil tank	53 L(14 gal.)
Final drive	5.8 L(1.52 gal.)/single side

OPERATING WEIGHT

	XL	LGP
Operating weight (ROPS canopy + traction frame)	9580 kg(21120 lb.)	9990kg(22024 lb.)
Operating weight (ROPS canopy + ripper)	10250 kg(22597 lb.)	10650 kg(23479lb.)
Operating weight (Cabin+ traction frame)	9850 kg(19951 lb.)	10300 kg(20640 lb.)
Operating weight (Cabin+ ripper)	10550kg(21400 lb.)	11000kg(22088 lb.)

BLADE

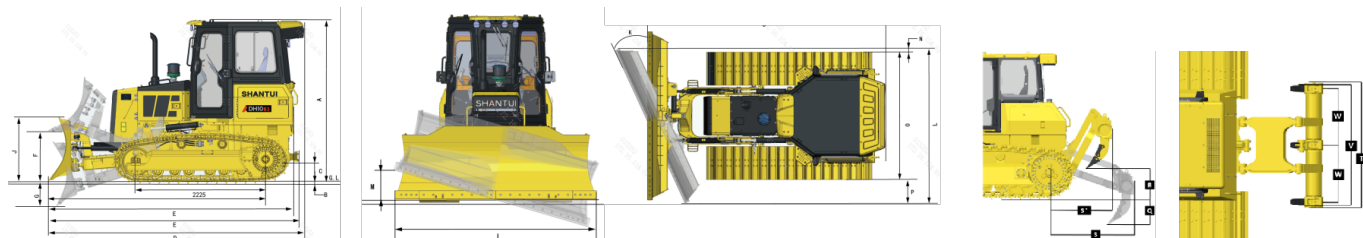
	XL	LGP
Blade type	PAT	PAT
Blade capacity	2.4 m ³ (3.14cu.yd.)	2.7m ³ (3.53cu.yd.)

DIMENSION

	XL	LGP
A Machine height (with Track grouser height)	2950 mm(116in.)	2950 mm(116 in.)
B Track grouser height	50 mm(2.0 in.)	50mm(2.0 in.)
C Ground clearance	340 mm(13.4 in.)	340 mm(13.4in.)
D Machine length (with air condition)	4580 mm(180 in.)	4580 mm(180 in.)
E Machine length (with draw bar)	4480 mm(176.4 in.)	4480 mm(176.4 in.)
E' Machine length (without draw bar)	4385 mm(153.2 in.)	4385 mm(153.2 in.)
E'' Length of blade to center of final drive	3892 mm(153.2 in.)	3892 mm(153.2 in.)
E''' Length of center of idle wheel final drive	2320 mm(91 in.)	2320 mm(91 in.)
F Max. lifting height of blade	900 mm(35 in.)	900 mm(35 in.)
G Max. digging depth of blade	450 mm(17.7 in.)	450 mm(17.7 in.)
H Digging angle of blade	55°±3°(deg.)	55°±3°(deg.)
I Blade width	2860 mm(113 in.)	3200 mm(126 in.)
J Blade height	1008 mm(39.7 in.)	1008 mm(39.7 in.)
K Max blade turning angle on ground	25°(deg.)	25°(deg.)
L Machine width when blade in max turning angle	2633 mm(104 in.)	2941 mm(116 in.)
M Max tilt height of blade	415 mm(16 in.)	458 mm(18 in.)
N Vertical distance from left track shoe outside to blade outside when blade in max turning angle	70 mm(2.8 in.)	70 mm(2.8 in.)
O Track shoes outside width	2110 mm(83 in.)	2420 mm(95 in.)
P Vertical distance from right track shoe outside to blade outside when blade in max turning angle	453 mm(18 in.)	453 mm(18 in.)
Min turning radius	3085 mm (121.4in.)	3165 mm(124.6 in.)

RIPPER

Q Max. ripping depth	340 mm(13.4 in.)	340 mm(13.4 in.)
R Max. lifting height	440 mm(17.3 in.)	440 mm(17.3 in.)
S Ripper length (at deepest ripping)	1366 mm(53.8 in.)	1366 mm(53.8 in.)
S' Ripper length (at highest point)	972 mm(38.3 in.)	972 mm(38.3 in.)
T Ripper width	1766 mm(69.5 in.)	1766 mm(69.5 in.)
V Ripping width	1696 mm(66.8 in.)	1696 mm(66.8 in.)
W Distance between ripper teeth	800 mm(31.5 in.)	800 mm(31.5 in.)



* THE SPECIFICATIONS ARE SUBJECT TO CHANGE WITHOUT NOTICE. THE PICTURES MAY INCLUDE OPTIONS. THE ACTUAL COLOR & APPEARANCE OF THE PRODUCT MAY DIFFER FROM WHAT IS SHOWN.

SHANTUI CONSTRUCTION MACHINERY CO., LTD.

ADD: No. 58, G327 Highway Jining City, Shandong, CHINA
 TEL: +86-537-2909369
 FAX: +86-537-2311219
 EMAIL: trade@shantui.com
 WEB: www.shantui.com

SHANTUI
 LET'S MAKE CONSTRUCTION EASIER